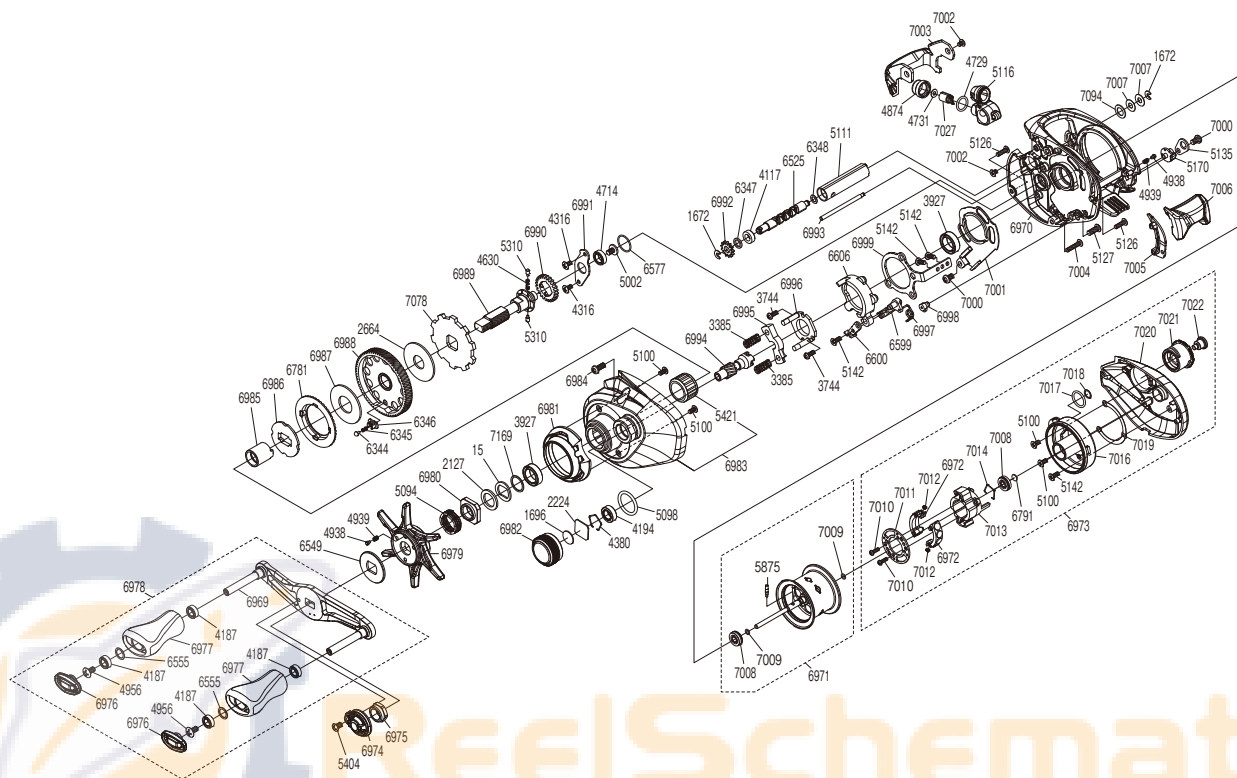


# SHIMANO

## ALDEBARAN

## 22ALBFSXGL



(51RL454A41X)

The (7008) Bearing, (5875) Spool clutch pin, and (5421) Roller clutch cannot be replaced by the customer.  
Please note that the number of adjusting washers may not be the same as shown in the exploded views.  
(Adjustment will vary with each individual product.)

Part No.	Description	Part No.	Description	Part No.	Description
BNT0015	Drag Spring Washer	BNT6344	Drag Click	BNT6992	Idle Gear
BNT1672	E Lock	BNT6345	Click Spring	BNT6993	Stabilizer Bar
BNT1696	Cast Control Spacer	BNT6346	Drag Click Pin Holder	BNT6994	Pinion Gear
BNT2127	Star Drag Spacer	BNT6347	Washer	BNT6995	Yoke
BNT2224	Cast Control Spacer	BNT6348	Washer	BNT6996	Clutch Cam Retainer
BNT2664	Drag Washer	BNT6525	Worm Shaft	BNT6997	Clutch Pawl Spring
BNT3385	Yoke Spring	BNT6549	Star Drag Click Plate	BNT6998	Clutch Spring Holder
BNT3744	Screw	BNT6555	Washer	BNT6999	Clutch Plate
BNT3927	Ball Bearing	BNT6577	O Ring	BNT7000	Screw
BNT4117	Bushing	BNT6599	Clutch Pawl A	BNT7001	Clutch Guard
BNT4187	Ball Bearing	BNT6600	Clutch Pawl B	BNT7002	Screw
BNT4194	Ball Bearing	BNT6606	Clutch Cam	BNT7003	Level Wind Protector
BNT4316	Screw	BNT6781	Drag Click Ratchet	BNT7004	Screw
BNT4380	Retainer	BNT6791	Spacer B	BNT7005	Clutch Bar Guide
BNT4630	Idle Gear Spring	BNT6969	Handle Shank Assembly	BNT7006	Clutch Button
BNT4714	Ball Bearing	BNT6970	Frame Assembly	BNT7007	Washer
BNT4729	O Ring	BNT6971	Spool Assembly(With Bearing)	BNT7008	Ball Bearing
BNT4731	Washer	BNT6972	Magnet Holder Assembly	BNT7009	O Ring
BNT4874	Pawl Cap	BNT6973	Right Side Plate Assembly	BNT7010	Screw
BNT4938	Click Pin	BNT6974	Handle Nut Plate	BNT7011	Brake Set Plate
BNT4939	Click Spring	BNT6975	Handle Nut	BNT7012	Brake Spring
BNT4956	Screw	BNT6976	Handle Knob Seal	BNT7013	Brake Holder
BNT5002	Screw	BNT6977	Handle Knob	BNT7014	Bearing Retainer
BNT5094	Star Drag Spring	BNT6978	Handle Assembly	BNT7016	Dial Case Assembly
BNT5098	O Ring	BNT6979	Star Drag	BNT7017	O Ring
BNT5100	Screw	BNT6980	Star Drag Nut	BNT7018	Washer
BNT5111	Level Wind Guard	BNT6981	Clutch Button Attachment	BNT7019	Washer
BNT5116	Line Guide Pawl Holder Assembly	BNT6982	Cast Control Cap	BNT7020	Right Side Plate
BNT5126	Screw	BNT6983	Left Side Plate Assembly	BNT7021	Br Dial
BNT5127	Screw	BNT6984	Screw	BNT7022	Screw
BNT5135	Cam Lever Retainer	BNT6985	Roller Clutch Inner Tube	BNT7027	Line Guide Pawl
BNT5142	Screw	BNT6986	Pressure Plate	BNT7078	Anti-Reverse Ratchet
BNT5170	Side Plate Cam Lever	BNT6987	Drag Washer	BNT7094	Washer
BNT5310	Idle Gear Pin	BNT6988	Drive Gear	BNT7169	Bearing Washer
BNT5404	Screw	BNT6989	Drive Shaft		
BNT5421	Roller Clutch Bearing	BNT6990	Idle Gear		
BNT5875	Spool Clutch Pin	BNT6991	Drive Shaft Retainer	BNT6806	Nok Oil (accessory)